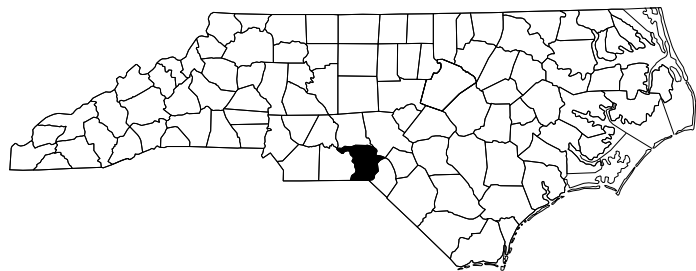


**CONTRACT: TIP PROJECT: BO-2408B**

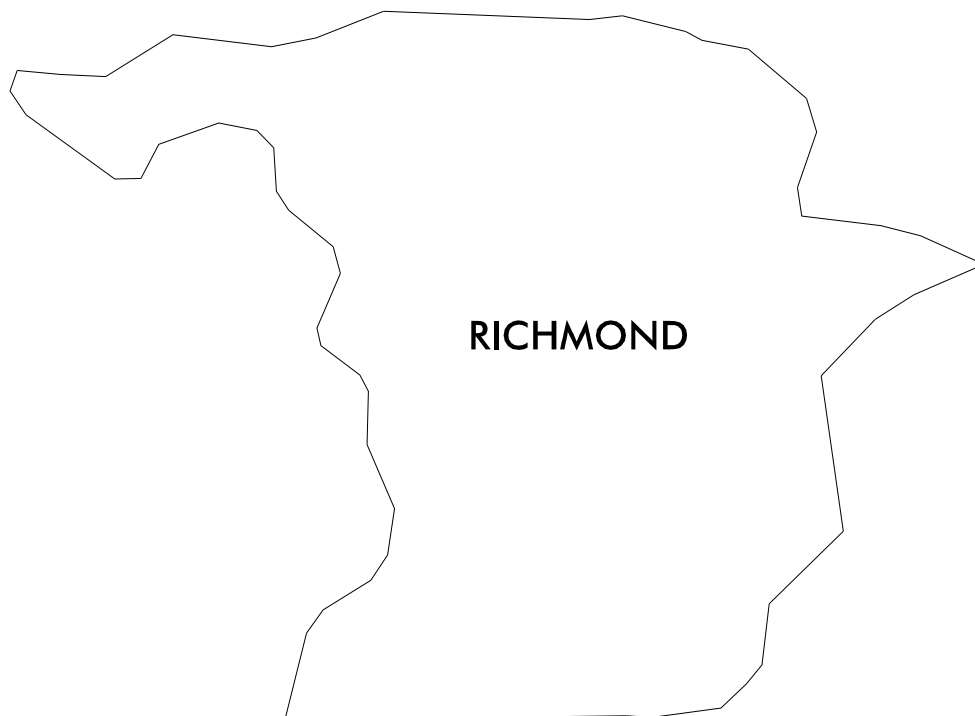
STATE OF NORTH CAROLINA  
DIVISION OF HIGHWAYS



***DIVISIONWIDE***

**LOCATION: RICHMOND COUNTY**

**TYPE OF WORK: CURB RAMP INSTALLATIONS**



STATE	STATE PROJECT REFERENCE NO.	SHEET NO.	TOTAL SHEETS
N.C.	BO-2408B	1	12
STATE PROJ. NO.	F.A. PROJ. NO.	DESCRIPTION	
50937.1.2	5093701	PE	
50937.3.4	5093704	CON	

Prepared In the Office of:  
**DIVISION OF HIGHWAYS**  
1000 Birch Ridge Dr., Raleigh NC, 27610

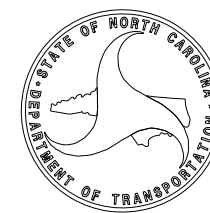
2024 STANDARD SPECIFICATIONS

RIGHT OF WAY DATE:

**MICHAEL RICKETTS**  
PROJECT ENGINEER

LETTING DATE:  
12/10/2024

**NV5**  
PROJECT DESIGN ENGINEER



ADA SUMMARY OF QUANTITIES - TOTALS

TIP Number:	BO-2408B
PE WBS Number:	50937.1.2
Con WBS Number:	50937.3.4
County:	Richmond

Sheet No.
2

TIP Number	County	Municipality	0000100000-N (LS) Mobilization	4457000000-N (LS) Temporary Traffic Control	1704000000-E (TON) Patching Existing Pavement	2549000000-E (LF) 2'-6" Concrete Curb & Gutter	2752000000-E (LF) Remove And Replace 2'-6" Concrete Curb & Gutter	2752000000-E (LF) Remove 2'-6" Concrete Curb & Gutter	2591000000-E (SY) 4" Concrete Sidewalk	2738000000-E (SY) Remove And Replace 4" Concrete Sidewalk	2738000000-E (SY) Remove 4" Concrete Sidewalk	2845000000-N (EA) Adjustment of Meter Boxes or Valve Boxes	4116100000-N (EA) Sign Erection, Relocate Type E (Ground Mounted)	2738000000-E (SY) Remove 5" Monolithic Concrete Islands (Keyed In)	2738000000-E (SY) Remove Driveway Apron	2612300000-N (EA) Retrofit Existing Concrete Curb Ramps	2612500000-N (EA) Remove and Replace Concrete Curb Ramps	2605000000-N (EA) Concrete Curb Ramps	2759000000-N (EA) Remove Concrete Curb Ramps
BO-2408B	Richmond	Ellerbe			1	145	0	77	43	111	9	2	1	0	0	2	30	4	1
BO-2408A	Richmond	Hamlet			0	35	30	0	0	15	0	0	0	0	12	0	0	1	0
BO-2408A	Richmond	Unincorporated Areas			0	350	15	16	47	43	27	0	0	8	0	0	6	3	16
-	-	-	1	1	-	-	-	-	-	-	-	-	-	-	-	-	-	-	-
<b>Total</b>			<b>1</b>	<b>1</b>	<b>1</b>	<b>530</b>	<b>45</b>	<b>93</b>	<b>90</b>	<b>169</b>	<b>36</b>	<b>2</b>	<b>1</b>	<b>8</b>	<b>12</b>	<b>2</b>	<b>36</b>	<b>8</b>	<b>17</b>

ADA SUMMARY OF QUANTITIES - ELLERBE

Municipality:	Ellerbe
Project Number:	BO-2408B
PE WBS Number:	50937.1.2
Con WBS Number:	50937.3.4
County:	Richmond

Sheet No.
3

Ramp ID	Inset Map Number	Route 1	Route 2	1704000000-E (TON) Patching Existing Pavement	2549000000-E (LF) 2'-6" Concrete Curb & Gutter	2752000000-E (LF) Remove And Replace 2'-6" Concrete Curb & Gutter	2752000000-E (LF) Remove 2'-6" Concrete Curb & Gutter	2591000000-E (SY) 4" Concrete Sidewalk	2738000000-E (SY) Remove And Replace 4" Concrete Sidewalk	2738000000-E (SY) Remove 4" Concrete Sidewalk	2845000000-N (EA) Adjustment of Meter Boxes or Valve Boxes	4116100000-N (EA) Sign Erection, Relocate Type E (Ground Mounted)	2738000000-E (SY) Remove 5" Monolithic Concrete Islands (Keyed In)	2738000000-E (SY) Remove Driveway Apron	2612300000-N (EA) Retrofit Existing Concrete Curb Ramps	2612500000-N (EA) Remove and Replace Concrete Curb Ramps	2605000000-N (EA) Concrete Curb Ramps	2759000000-N (EA) Remove Concrete Curb Ramps	Improvement Type	
382	1	US-220 (Main St)	Easterling Ave						3										1	Type 1C - 848.06
383	1	US-220 (Main St)	Easterling Ave						3		1								1	Type 1C - 848.06
384	2	US-220 (Main St)	King St						3										1	Type 1C - 848.06
385	2	US-220 (Main St)	King St																1	Type 1C - 848.06
386	3	US-220 (Main St)	SR-1450 (N Ledbetter St)					3											1	Type 1C - 848.06
387	3	US-220 (Main St)	SR-1450 (N Ledbetter St)						6										1	Type 2B - 848.06
136	4	SR-1450 (N Ledbetter St)	Railroad St												1					Retrofit Warnings - 848.06
139	4	SR-1450 (N Ledbetter St)	Railroad St													1				Standard - 848.06
1431	5	US-220 (Main St)	W Sunset Ave		16	22												1		Type 1 Modified - 848.06
169	6	SR-1309 (W Page St)	Second St		15				3										1	Type 2A Modified - 848.06
173	6	SR-1309 (W Page St)	Second St																1	Type 2B - 848.06
1430	6	SR-1309 (W Page St)	Second St						3										1	Type 1 Modified - 848.06
177	7	SR-1309 (W Page St)	Third St						3										1	Type 1 Modified - 848.06
178	7	SR-1309 (W Page St)	Third St						3										1	Type 1C - 848.06
205	8	SR-1309 (W Page St)	Fourth St																1	Type 1C - 848.06
206	8	SR-1309 (W Page St)	Fourth St						6										1	Type 1C - 848.06
359	9	SR-1309 (W Page St)	Fifth St						6										1	Type 1A - 848.06
360	9	SR-1309 (W Page St)	Fifth St																1	Type 1A - 848.06
371	10	SR-1309 (W Page St)	Sixth St						6										1	Type 1C - 848.06
374	11	SR-1312 (W Ballard St)	Ellerbe Middle School (128 Ballard St) West Entrance						3		1								1	Type 1C - 848.06
375	11	SR-1312 (W Ballard St)	Ellerbe Middle School (128 Ballard St) West Entrance																1	Type 1C - 848.06
376	11	SR-1312 (W Ballard St)	Third St																1	Type 1A - 848.06
377	11	SR-1312 (W Ballard St)	Third St		4	4			9										1	Standard - 848.06
372	12	SR-1312 (W Ballard St)	Ellerbe Middle School (128 Ballard St) East Entrance																1	Type 1C - 848.06
373	12	SR-1312 (W Ballard St)	Ellerbe Middle School (128 Ballard St) East Entrance						3										1	Type 1C - 848.06
378	13	SR-1312 (W Ballard St)	Second St						3										1	Type 1C - 848.06
379	13	SR-1312 (W Ballard St)	Second St						6										1	Type 2 - 848.06
392	14	US-220 (Main St)	E Ballard St	1					15	3									1	Type 1 - 848.06
393	14	US-220 (Main St)	SR-1312 (W Ballard St)						6										1	Type 1C - 848.06
394	14	US-220 (Main St)	SR-1312 (W Ballard St)						21										1	Standard - 848.06
395	14	US-220 (Main St)	E Ballard St																1	Type 1 - 848.06
1429	15	US-220 (Main St)	Ratcliff St																1	Type 1 Modified - 848.06
<b>Sub-Total</b>				<b>1</b>	<b>35</b>	<b>0</b>	<b>26</b>	<b>3</b>	<b>111</b>	<b>3</b>	<b>2</b>	<b>0</b>	<b>0</b>	<b>0</b>	<b>1</b>	<b>30</b>	<b>1</b>	<b>0</b>		

Notes: (1) ADA quantity totals are provided on the project 'ADA SUMMARY OF QUANTITIES - TOTALS' page.

ADA SUMMARY OF QUANTITIES - ELLERBE

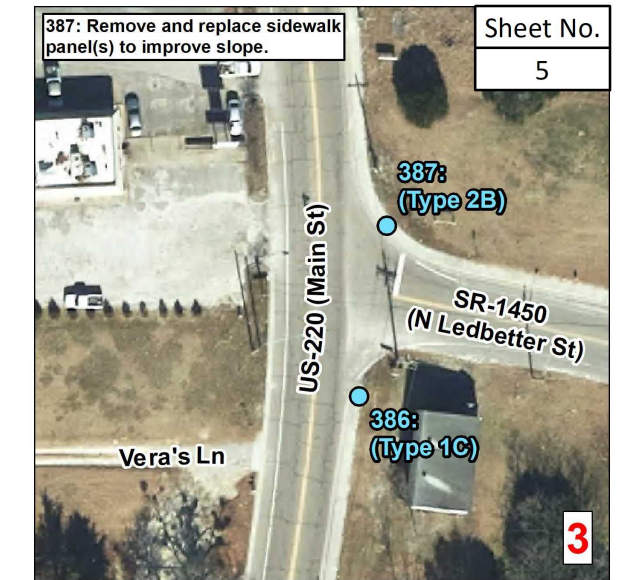
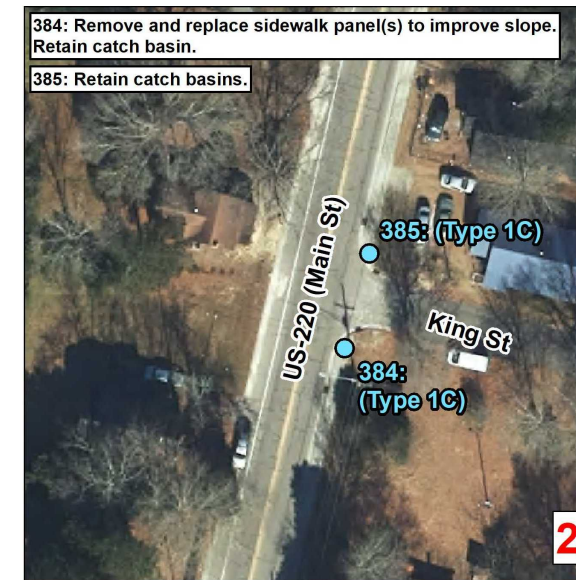
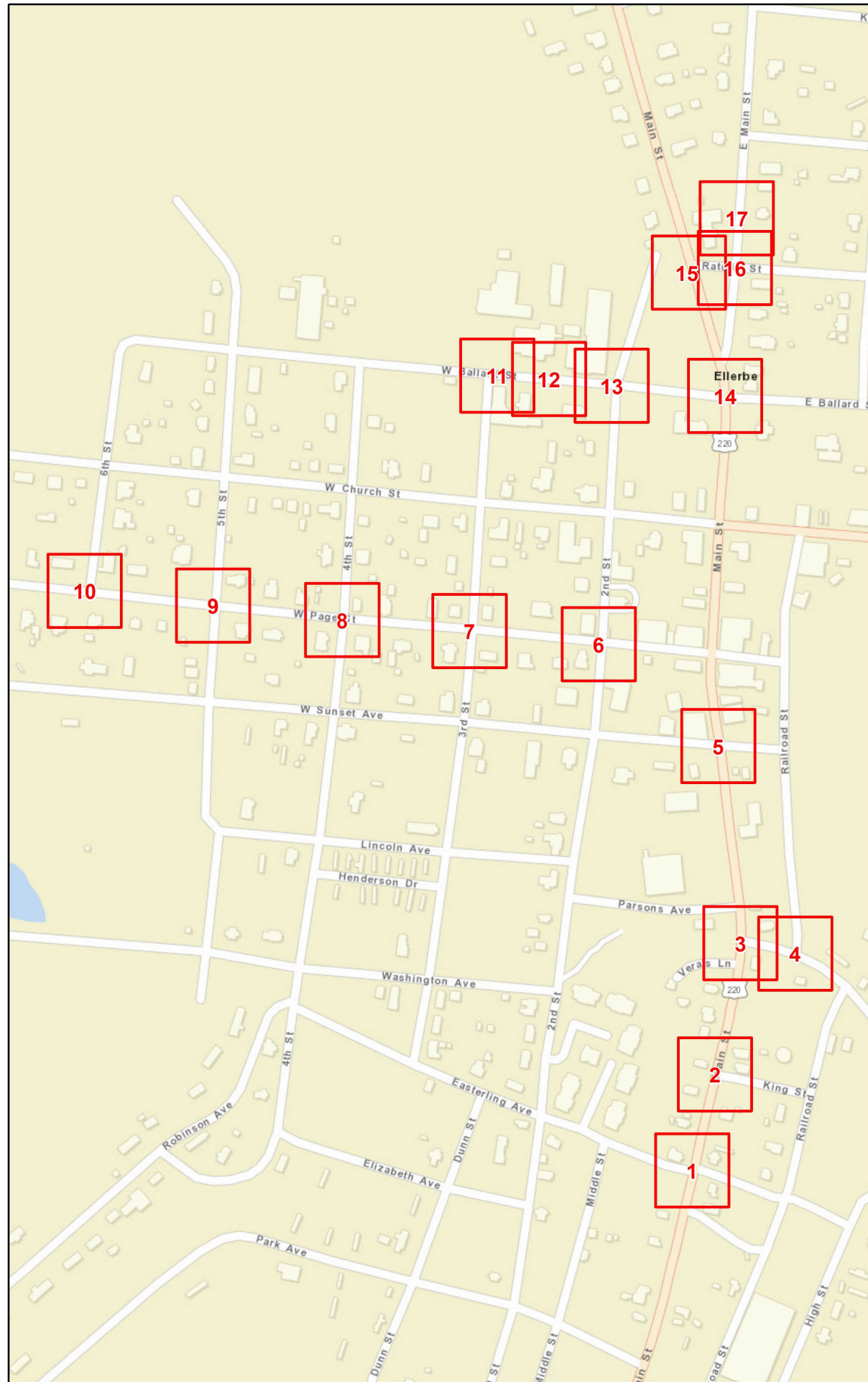
Sheet No.
4

Municipality:	Ellerbe
Project Number:	BO-2408B
PE WBS Number:	50937.1.2
Con WBS Number:	50937.3.4
County:	Richmond

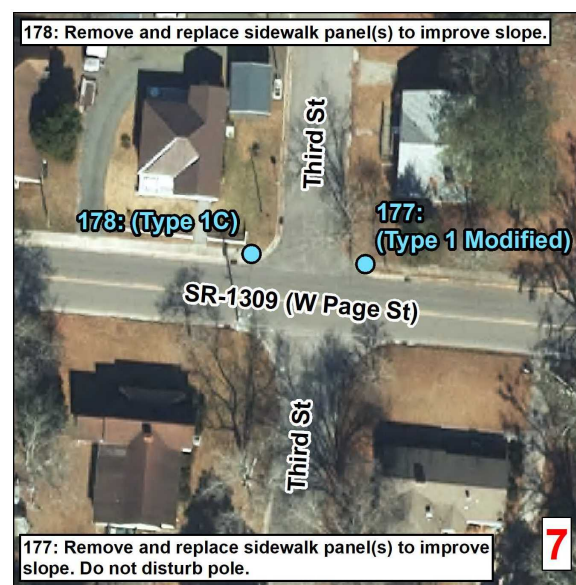
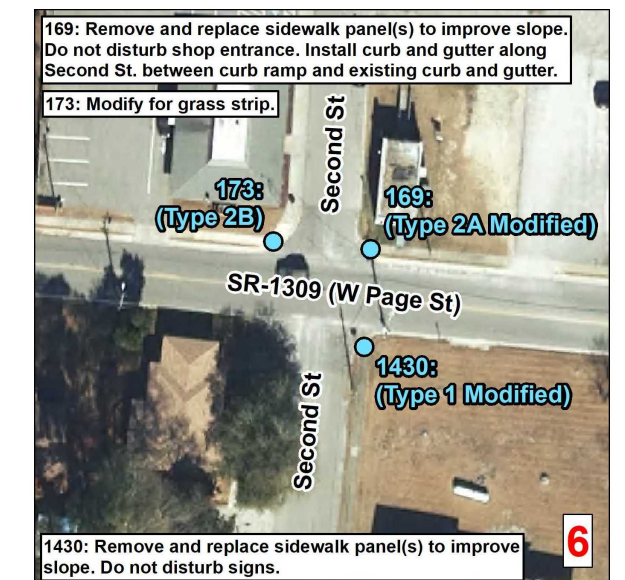
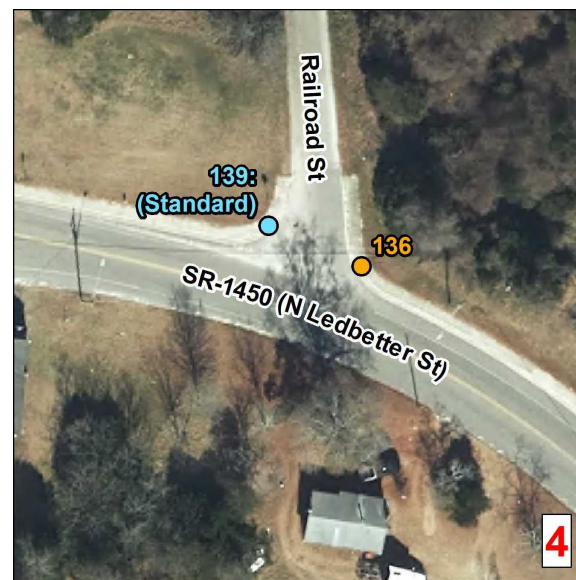
Ramp ID	Inset Map Number	Route 1	Route 2	1704000000-E (TON) Patching Existing Pavement	2549000000-E (LF) 2'-6" Concrete Curb & Gutter	2752000000-E (LF) Remove And Replace 2'-6" Concrete Curb & Gutter	2752000000-E (LF) Remove 2'-6" Concrete Curb & Gutter	2591000000-E (SY) 4" Concrete Sidewalk	2738000000-E (SY) Remove And Replace 4" Concrete Sidewalk	2738000000-E (SY) Remove 4" Concrete Sidewalk	2845000000-N (EA) Adjustment of Meter Boxes or Valve Boxes	4116100000-N (EA) Sign Erection, Relocate Type E (Ground Mounted)	2738000000-E (SY) Remove 5" Monolithic Concrete Islands (Keyed In)	2738000000-E (SY) Remove Driveway Apron	2612300000-N (EA) Retrofit Existing Concrete Curb Ramps	2612500000-N (EA) Remove and Replace Concrete Curb Ramps	2605000000-N (EA) Concrete Curb Ramps	2759000000-N (EA) Remove Concrete Curb Ramps	Improvement Type
381	16	SR-1454 (E Main St)	Ratcliff St				14			6							1		Type 1C - 848.06
1428	16	SR-1454 (E Main St)	Ellerbe First Baptist Church (2116 Main St) South Entrance		13			8				1						1	Remove Ramp
1530	16	SR-1454 (E Main St)	Ratcliff St				13	18									1		Type 1C - 848.06
1531	16	SR-1454 (E Main St)	Ratcliff St		7		24	14									1		Type 2A Modified - 848.06
1427	17	SR-1454 (E Main St)	Ellerbe First Baptist Church (2116 Main St) North entrance												1				Retrofit Warnings - 848.06
-	-	-	-	-	90*	-	-	-	-	-	-	-	-	-	-	-	-	-	
<b>Sub-Total</b>				<b>0</b>	<b>110</b>	<b>0</b>	<b>51</b>	<b>40</b>	<b>0</b>	<b>6</b>	<b>0</b>	<b>1</b>	<b>0</b>	<b>0</b>	<b>1</b>	<b>0</b>	<b>3</b>	<b>1</b>	
<b>Sub-Total for Ellerbe</b>				<b>1</b>	<b>145</b>	<b>0</b>	<b>77</b>	<b>43</b>	<b>111</b>	<b>9</b>	<b>2</b>	<b>1</b>	<b>0</b>	<b>0</b>	<b>2</b>	<b>30</b>	<b>4</b>	<b>1</b>	

Notes: (1) ADA quantity totals are provided on the project 'ADA SUMMARY OF QUANTITIES - TOTALS' page. (2) \*Contingency line item amount provided for adjustments outside of curb ramp pay limits.





Sheet No.  
5



**Curb Ramps To Be Repaired**

- Retrofit
- Remove and Replace
- New Curb Ramp
- Remove Ramp

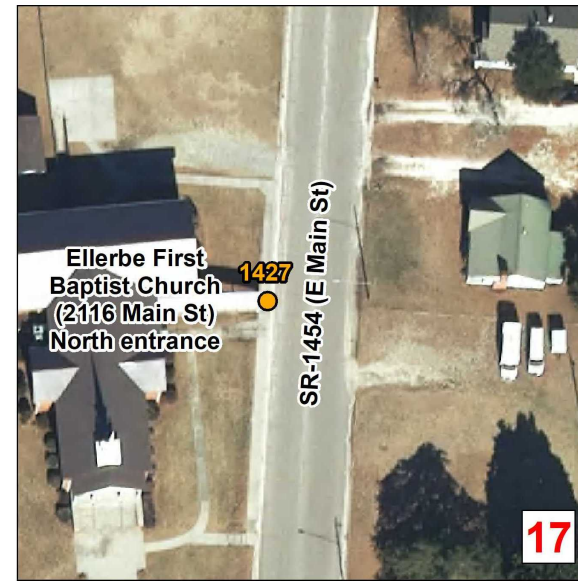
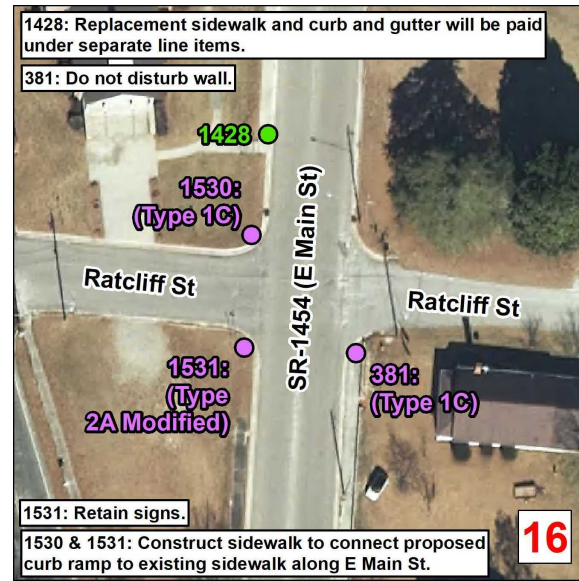
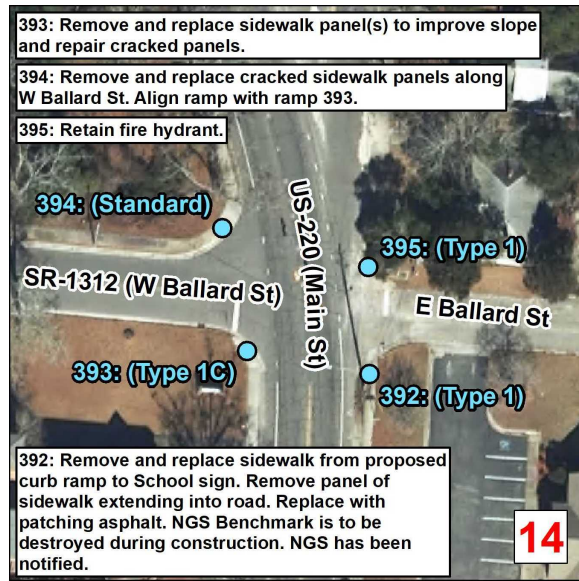
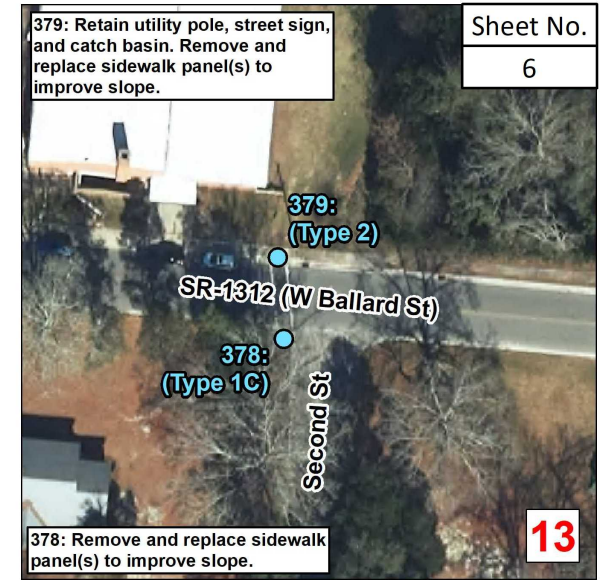
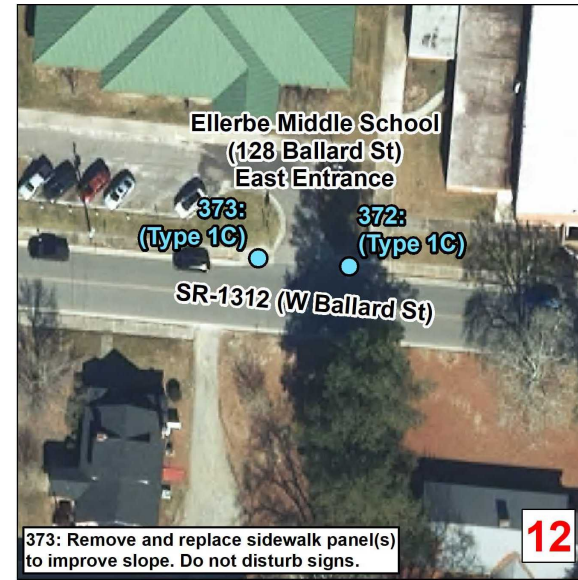
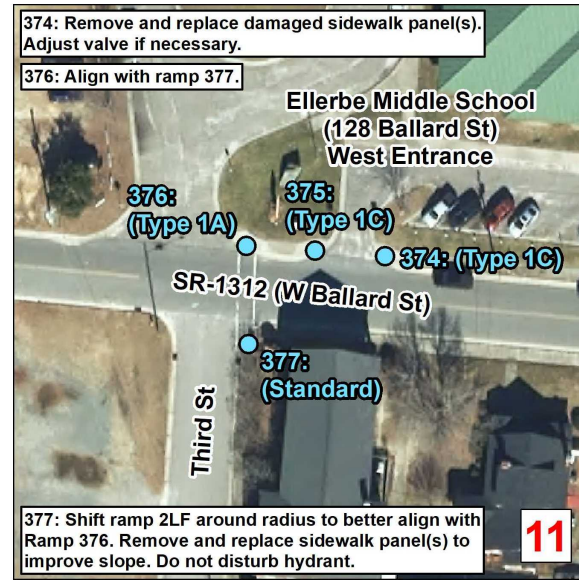
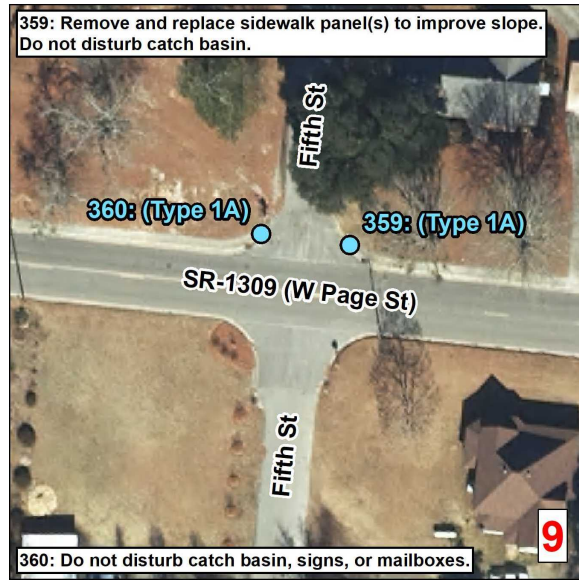
Municipal Boundary  
 Census Urban Areas (>5,000 Pop)  
 NCHPO Historic Boundary (NR and LHD)

**Curb Ramps in Areas <5,000 Population**  
 Municipality: Ellerbe  
 TIP Number: BO-2408B  
 PE WBS Number: 50937.1.2  
 CON WBS Number: 50937.3.4  
 County: Richmond

NORTH CAROLINA DEPARTMENT OF TRANSPORTATION  
 DIVISION 8

Source: NV5 Engineers and Consultants Inc., ESRI, NC OneMap, NCDOT, NCHPO





**Curb Ramps To Be Repaired**

- Retrofit
- Remove and Replace
- New Curb Ramp
- Remove Ramp

Municipal Boundary  
 Census Urban Areas (>5,000 Pop)  
 NCHPO Historic Boundary (NR and LHD)

**Curb Ramps in Areas <5,000 Population**  
 Municipality: Ellerbe  
 TIP Number: BO-2408B  
 PE WBS Number: 50937.1.2  
 CON WBS Number: 50937.3.4  
 County: Richmond

NORTH CAROLINA DEPARTMENT OF TRANSPORTATION  
 DIVISION 8

Source: NV5 Engineers and Consultants Inc., ESRI, NC OneMap, NCDOT, NCHPO



ADA SUMMARY OF QUANTITIES - HAMLET

Sheet No.
7

Municipality:	Hamlet
Project Number:	BO-2408B
PE WBS Number:	50937.1.2
Con WBS Number:	50937.3.4
County:	Richmond

Ramp ID	Inset Map Number	Route 1	Route 2	1704000000-E (TON) Patching Existing Pavement	2549000000-E (LF) 2'-6" Concrete Curb & Gutter	2752000000-E (LF) Remove And Replace 2'-6" Concrete Curb & Gutter	2752000000-E (LF) Remove 2'-6" Concrete Curb & Gutter	2591000000-E (SY) 4" Concrete Sidewalk	2738000000-E (SY) Remove And Replace 4" Concrete Sidewalk	2738000000-E (SY) Remove 4" Concrete Sidewalk	2845000000-N (EA) Adjustment of Meter Boxes or Valve Boxes	4116100000-N (EA) Sign Erection, Relocate Type E (Ground Mounted)	2738000000-E (SY) Remove 5" Monolithic Concrete Islands (Keyed In)	2738000000-E (SY) Remove Driveway Apron	2612300000-N (EA) Retrofit Existing Concrete Curb Ramps	2612500000-N (EA) Remove and Replace Concrete Curb Ramps	2605000000-N (EA) Concrete Curb Ramps	2759000000-N (EA) Remove Concrete Curb Ramps	Improvement Type
12	1	US-74 BUS (Spring St)	SR-1608 (Veterans Dr)		35	30			15	0	0	0	0	12	0	0	1	0	Type 1 Modified - 848.06
<b>Sub-Total for Hamlet</b>				<b>0</b>	<b>35</b>	<b>30</b>	<b>0</b>	<b>0</b>	<b>15</b>	<b>0</b>	<b>0</b>	<b>0</b>	<b>0</b>	<b>12</b>	<b>0</b>	<b>0</b>	<b>1</b>	<b>0</b>	

Note: ADA quantity totals are provided on the project 'ADA SUMMARY OF QUANTITIES - TOTALS' page.



Additional non-compliant and/or missing curb ramps at this intersection are located within >5,000 population Census Urban Areas and are not funded for repair under this contract.

12: Remove driveway apron and replace with curb and gutter. Remove and replace damaged sidewalk panel(s) along edge of driveway apron. Remove and replace curb and gutter from edge of driveway apron through the radius.

<p><b>Curb Ramps To Be Repaired</b></p> <ul style="list-style-type: none"> <li><span style="color: orange;">●</span> Retrofit</li> <li><span style="color: cyan;">●</span> Remove and Replace</li> <li><span style="color: purple;">●</span> New Curb Ramp</li> <li><span style="color: green;">●</span> Remove Ramp</li> </ul>		
<ul style="list-style-type: none"> <li> Municipal Boundary</li> <li> Census Urban Areas (&gt;5,000 Pop)</li> <li> NCHPO Historic Boundary (NR and LHD)</li> </ul>		
<p><b>Curb Ramps in Areas &lt;5,000 Population</b>  <b>Municipality: Hamlet</b>  <b>TIP Number: BO-2408B</b>  <b>PE WBS Number: 50937.1.2</b>  <b>CON WBS Number: 50937.3.4</b>  <b>County: Richmond</b></p>		
		<p>NORTH CAROLINA DEPARTMENT OF TRANSPORTATION DIVISION 8</p>
<p>Source: NV5 Engineers and Consultants Inc., ESRI, NC OneMap, NCDOT, NCHPO</p>		

ADA SUMMARY OF QUANTITIES - UNINCORPORATED AREAS - RICHMOND COUNTY

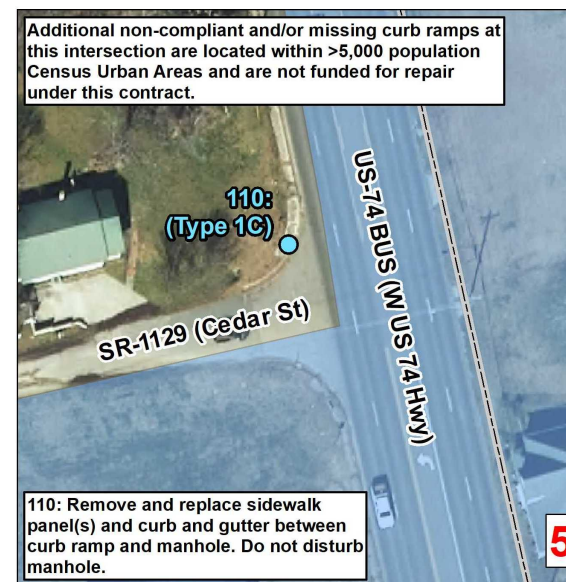
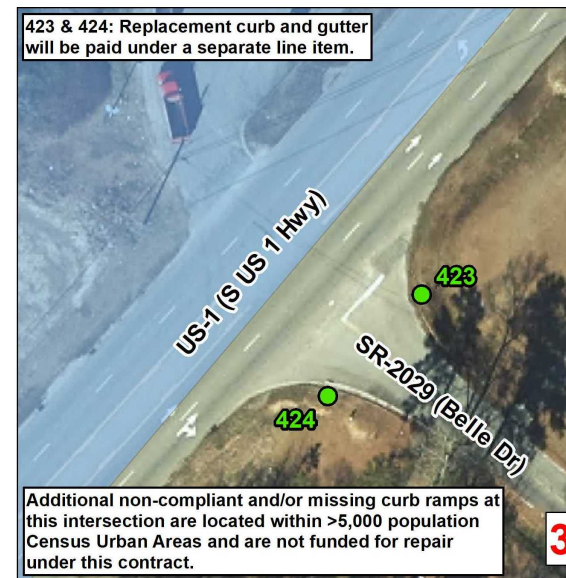
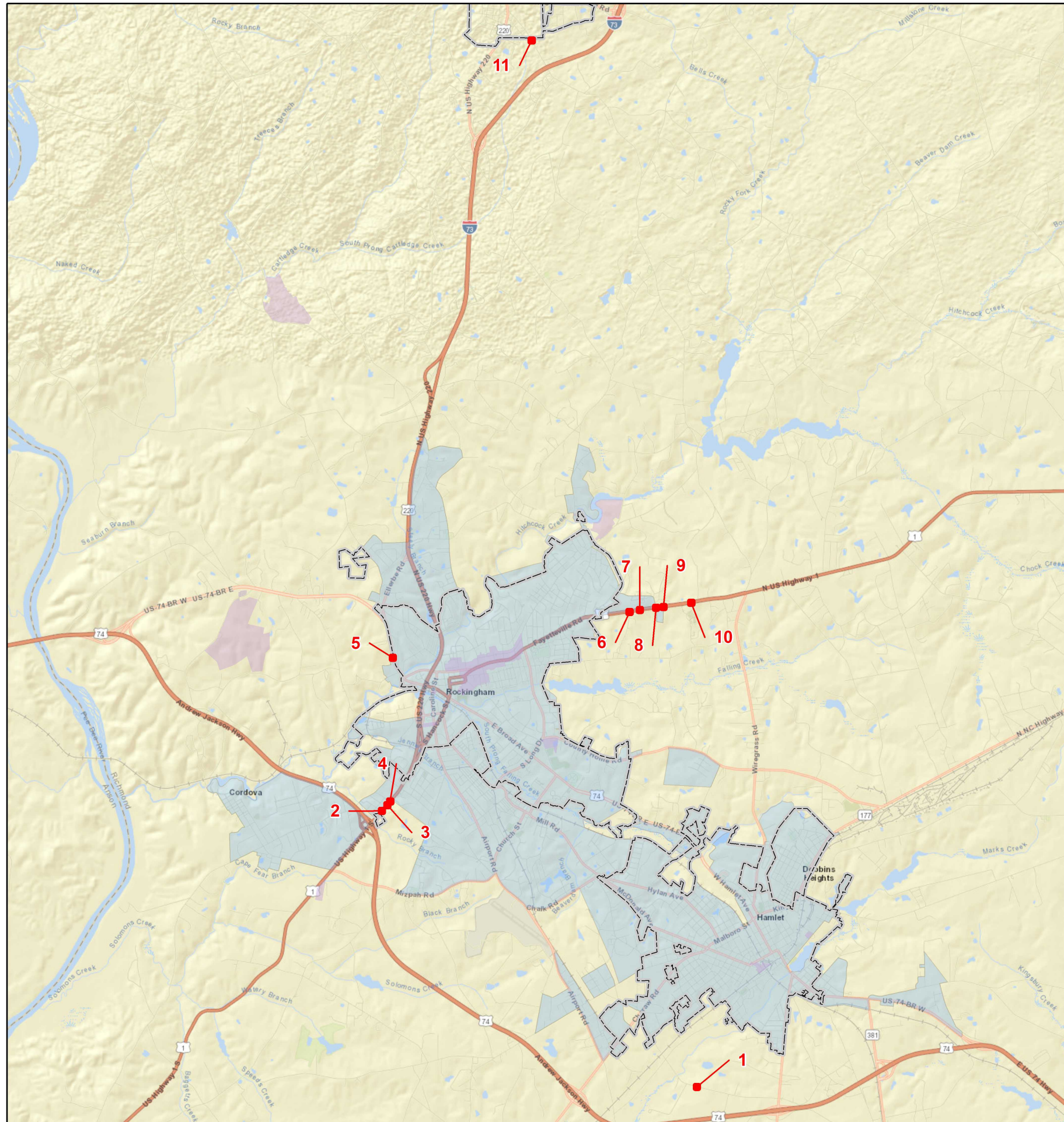
Municipality:	Unincorporated Areas
Project Number:	BO-2408B
PE WBS Number:	50937.1.2
Con WBS Number:	50937.3.4
County:	Richmond

Sheet No.
9

Ramp ID	Inset Map Number	Route 1	Route 2	1704000000-E (TON) Patching Existing Pavement	2549000000-E (LF) 2'-6" Concrete Curb & Gutter	2752000000-E (LF) Remove And Replace 2'-6" Concrete Curb & Gutter	2752000000-E (LF) Remove 2'-6" Concrete Curb & Gutter	2591000000-E (SY) 4" Concrete Sidewalk	2738000000-E (SY) Remove And Replace 4" Concrete Sidewalk	2738000000-E (SY) Remove 4" Concrete Sidewalk	2845000000-N (EA) Adjustment of Meter Boxes or Valve Boxes	4116100000-N (EA) Sign Erection, Relocate Type E (Ground Mounted)	2738000000-E (SY) Remove 5" Monolithic Concrete Islands (Keyed In)	2738000000-E (SY) Remove Driveway Apron	2612300000-N (EA) Retrofit Existing Concrete Curb Ramps	2612500000-N (EA) Remove and Replace Concrete Curb Ramps	2605000000-N (EA) Concrete Curb Ramps	2759000000-N (EA) Remove Concrete Curb Ramps	Improvement Type
1484	1	SR-1812 (Freeman Mill Rd)	American Woodmark (200 Development Dr) Freeman Mill Rd Entrance		30					3								1	Remove Ramp
1485	1	SR-1812 (Freeman Mill Rd)	American Woodmark (200 Development Dr) Freeman Mill Rd Entrance		30					3								1	Remove Ramp
421	2	US-1 (S US 1 Hwy)	SR-1180 (Southwood Dr)		15													1	Remove Ramp
422	2	US-1 (S US 1 Hwy)	SR-1180 (Southwood Dr)		25													1	Remove Ramp
423	3	US-1 (S US 1 Hwy)	SR-2029 (Belle Dr)		30													1	Remove Ramp
424	3	US-1 (S US 1 Hwy)	SR-2029 (Belle Dr)		30													1	Remove Ramp
425	4	US-1 (S US 1 Hwy)	SR-1187 (Springdale Dr)		16													1	Remove Ramp
426	4	US-1 (S US 1 Hwy)	SR-1187 (Springdale Dr)		16													1	Remove Ramp
110	5	US-74 BUS (W US 74 Hwy)	SR-1129 (Cedar St)			15			10							1			Type 1C - 848.06
403	6	US-1 (N US 1 Hwy)	SR-1645 (Mt Olive Ch Rd)				6		6							1			Type 1 Modified - 848.06
404	6	US-1 (N US 1 Hwy)	SR-1645 (Mt Olive Ch Rd)		15					6								1	Remove Ramp
405	6	US-1 (N US 1 Hwy)	SR-1645 (Mt Olive Ch Rd)						6							1			Type 1D - 848.06
406	6	US-1 (N US 1 Hwy)	SR-1645 (Mt Olive Ch Rd)		17			10										1	Remove Ramp
407	7	US-1 (N US 1 Hwy)	SR-1503 (Philadelphia Dr)		17			9										1	Remove Ramp
408	7	US-1 (N US 1 Hwy)	SR-1503 (Philadelphia Dr)		17			9										1	Remove Ramp
411	8	US-1 (N US 1 Hwy)	SR-1682 (Patterson Rd)		22			10										1	Remove Ramp
413	8	US-1 (N US 1 Hwy)	SR-1504 (Philadelphia Dr)						6							1			Standard - 848.06
414	9	US-1 (N US 1 Hwy)	SR-1666 (Ellen Rd)		20			9										1	Remove Ramp
1527	9	US-1 (N US 1 Hwy)	SR-1666 (Ellen Rd)				10			9							1		Type 1A - 848.06
1528	9	US-1 (N US 1 Hwy)	SR-1666 (Ellen Rd)										4				1		Type 7 - 848.06
1529	9	US-1 (N US 1 Hwy)	SR-1666 (Ellen Rd)										4				1		Type 7 - 848.06
415	10	US-1 (N US 1 Hwy)	Richmond Senior High School (838 US-1)		15					6								1	Remove Ramp
416	10	US-1 (N US 1 Hwy)	Richmond Senior High School (838 US-1)						6							1			Type 1 Modified - 848.06
418	10	US-1 (N US 1 Hwy)	Richmond Senior High School (838 US-1)		17				6									1	Remove Ramp
114	11	SR-1450 (Green Lake Rd)	Mineral Springs School (1426 Green Lake Rd) Bus entrance						3							1			Type 1C - 848.06
-	-	-	-	-	18*	-	-	-	-	-	-	-	-	-	-	-	-	-	-
<b>Sub-Total for Unincorporated Areas - Richmond County</b>				<b>0</b>	<b>350</b>	<b>15</b>	<b>16</b>	<b>47</b>	<b>43</b>	<b>27</b>	<b>0</b>	<b>0</b>	<b>8</b>	<b>0</b>	<b>0</b>	<b>6</b>	<b>3</b>	<b>16</b>	

Notes: (1) ADA quantity totals are provided on the project 'ADA SUMMARY OF QUANTITIES - TOTALS' page. (2) \*Contingency line item amount provided for adjustments outside of curb ramp pay limits.





**Curb Ramps To Be Repaired**

- Retrofit
- Remove and Replace
- New Curb Ramp
- Remove Ramp

Municipal Boundary

Census Urban Areas (>5,000 Pop)

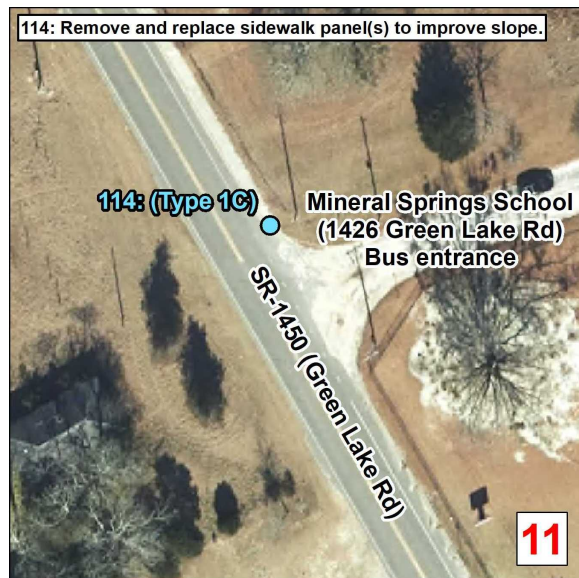
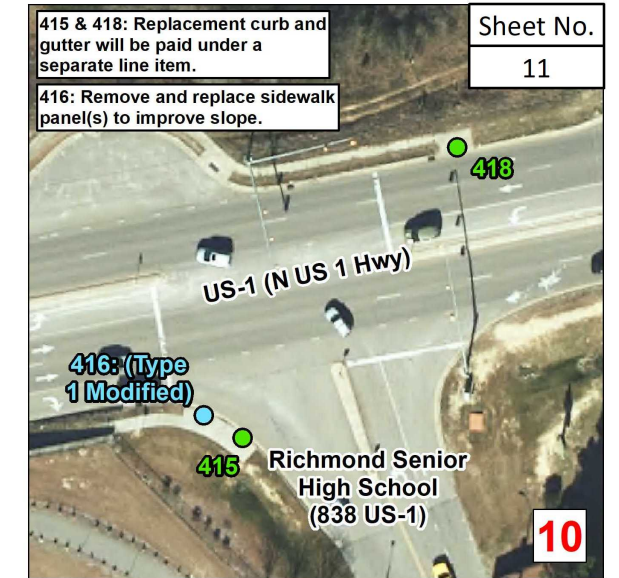
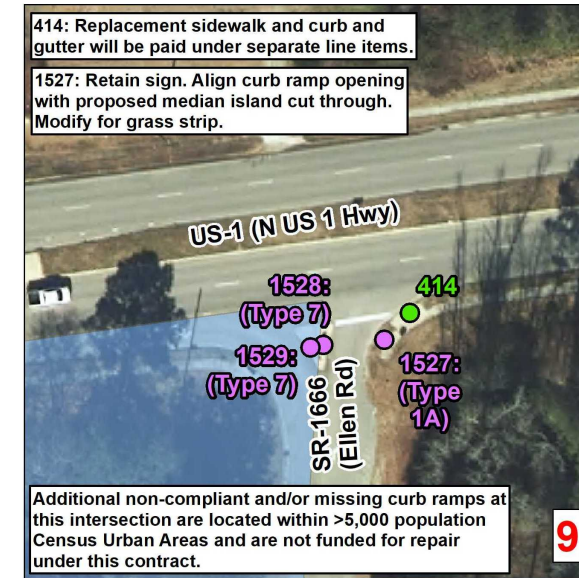
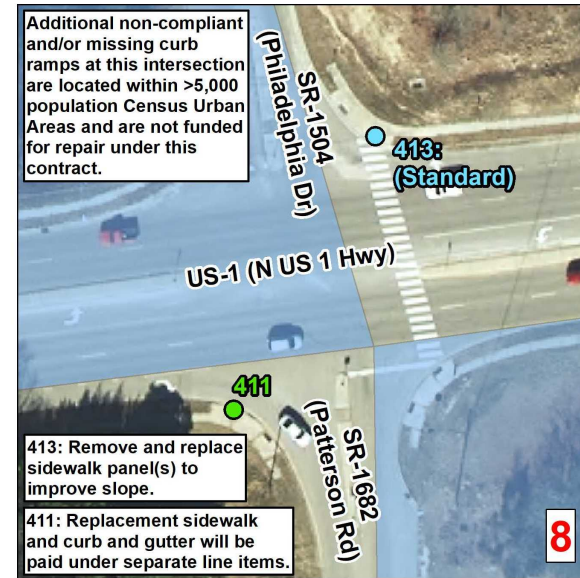
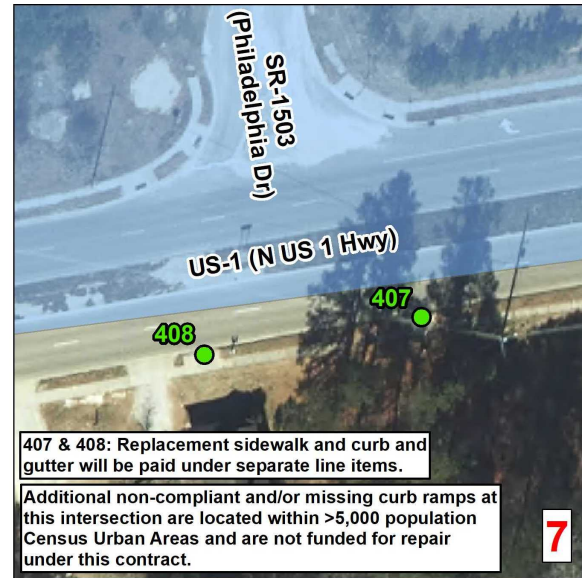
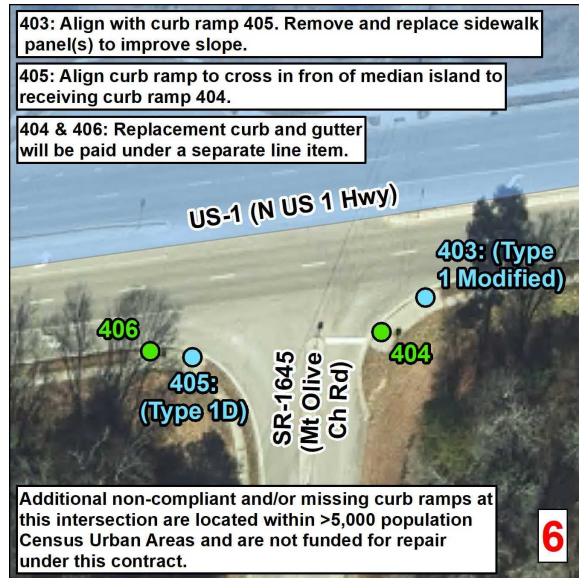
NCHPO Historic Boundary (NR and LHD)

**Curb Ramps in Areas <5,000 Population Municipality: Unincorporated Areas**  
**TIP Number: BO-2408B**  
**PE WBS Number: 50937.1.2**  
**CON WBS Number: 50937.3.4**  
**County: Richmond**

NORTH CAROLINA DEPARTMENT OF TRANSPORTATION  
DIVISION 8

Source: NV5 Engineers and Consultants Inc., ESRI, NC OneMap, NCDOT, NCHPO





**Curb Ramps To Be Repaired**

- Retrofit
- Remove and Replace
- New Curb Ramp
- Remove Ramp

Municipal Boundary

Census Urban Areas (>5,000 Pop)

NCHPO Historic Boundary (NR and LHD)

**Curb Ramps in Areas <5,000 Population**  
**Municipality: Unincorporated Areas**  
**TIP Number: BO-2408B**  
**PE WBS Number: 50937.1.2**  
**CON WBS Number: 50937.3.4**  
**County: Richmond**

NORTH CAROLINA DEPARTMENT OF TRANSPORTATION  
DIVISION 8

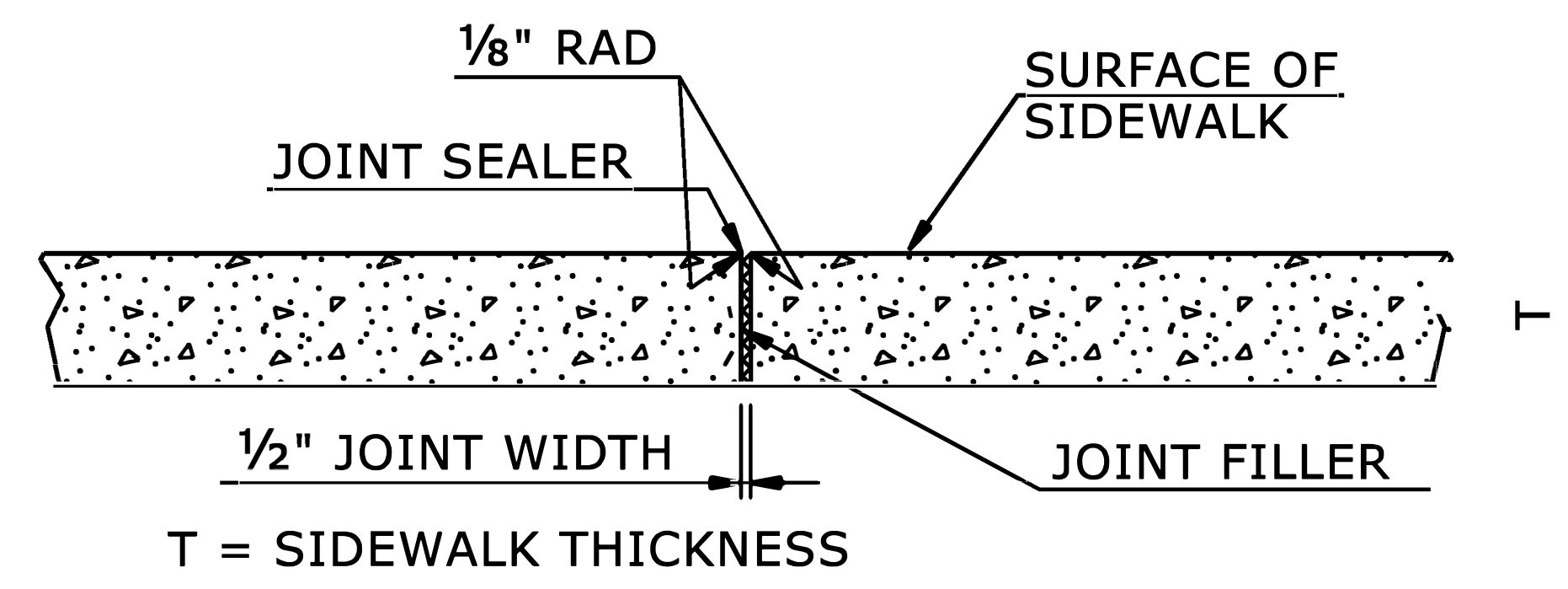
Source: NV5 Engineers and Consultants Inc., ESRI, NC OneMap, NCDOT, NCHPO

NOTES:

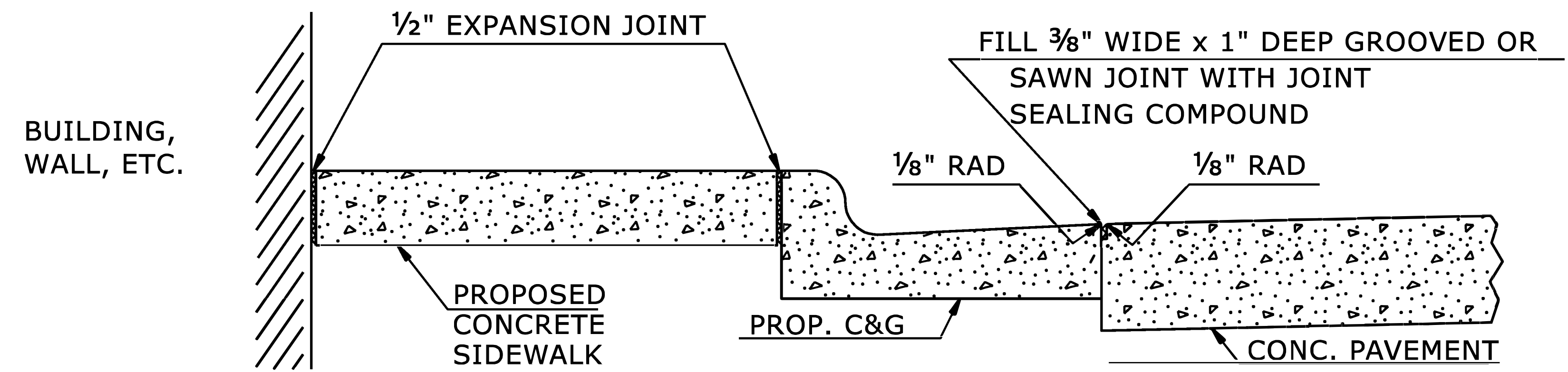
CONSTRUCT STANDARD SIDEWALK 5' WIDE AND 4" THICK UNLESS OTHERWISE DENOTED ON PLANS.

PLACE A GROOVE JOINT 1" DEEP WITH 1/8" RADII IN THE CONCRETE SIDEWALK AT 5' INTERVALS. ONE 1/2" EXPANSION JOINT WILL BE REQUIRED AT 50' INTERVALS. A 1/2" EXPANSION JOINT WILL BE REQUIRED WHERE THE SIDEWALK JOINS ANY RIGID STRUCTURE.

SEE STD. DWG. 848.06 FOR CURB RAMP LOCATION REQUIREMENTS AND CONSTRUCTION GUIDELINES.



TRANSVERSE EXPANSION JOINT IN SIDEWALK



DETAILS SHOWING JOINTS IN CONCRETE SIDEWALK

STATE OF NORTH CAROLINA DEPT. OF TRANSPORTATION DIVISION OF HIGHWAYS RALEIGH, N.C.

ROADWAY DETAIL DRAWING FOR CONCRETE SIDEWALK



Signed by: Nicole M. Hackler 11/8/2024

SHEET 1 OF 1 848D01

DOCUMENT NOT CONSIDERED FINAL UNLESS ALL SIGNATURES COMPLETED

CONTRACTS STANDARDS AND DEVELOPMENT UNIT Office 919-707-6950 FAX 919-250-4119

SEE TITLE BLOCK

ORIGINAL BY:	S.CALHOUN	DATE:	7-25-2024
MODIFIED BY:		DATE:	
CHECKED BY:		DATE:	
FILE SPEC.:			